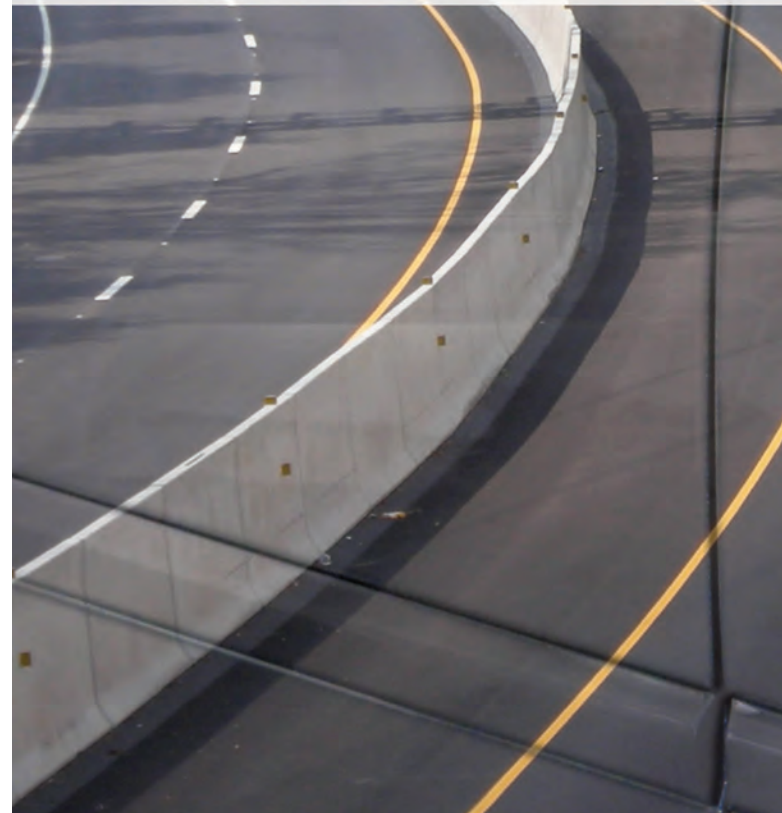




Drive Safe PA



What is Drive Safe PA?

While traffic fatalities are steadily declining in the state, nearly 1,500 people are still losing their lives each year on Pennsylvania roads. Tragically, most of those deaths could have been prevented if drivers would have simply chosen to "Drive Safe" and avoid bad behaviors such as driving impaired, driving aggressively or not buckling up.

Drive Safe PA is a way for all citizens to do their part to enhance safety on Pennsylvania's highways. In addition, PennDOT will collaborate with its partners to save at least 100 more lives each year on Pennsylvania roads, with the goal of reducing fatalities to 1,150 or less by 2011.

The vision of Drive Safe PA is providing the safest roadways possible so that everyone arrives safely at their destinations. PennDOT will accomplish this by developing, promoting and implementing education, enforcement, engineering and emergency services strategies.



Safe Driving Facts

- Driver behavior accounts for more than 80 percent of all Pennsylvania crashes.
- Twice as many people lose their lives in crashes than homicides each year in Pennsylvania.
- On an average day in Pennsylvania, there are about 350 crashes on our highways.
- One person is killed in a crash on Pennsylvania roads every six hours.



What can I do to make a difference?

Saving lives on our highways is a monumental task and PennDOT can't do it alone. Because driver behavior plays a key role in most crashes, we need individual drivers just like you to make a difference by practicing safe driving habits.

A good start for saving lives is as simple as buckling your seat belt each time you get into a vehicle. Make sure everyone else in the vehicle does, too.

Avoid dangerous driving situations such as driving under the influence of alcohol or drugs, or driving aggressively by speeding or tailgating.

When you are behind the wheel, eliminate all distractions and give your full attention to the road. Even looking away for a few seconds can increase your risk of a crash.

Finally, set a positive example and talk to others about the importance of safe driving.

Drive Safe PA!



Seat Belts

Wearing your seat belt is your best defense against injury or death in the event of a crash. Despite this, far too many motorists still refuse to buckle up for a variety of reasons.

I'm not driving very far. **FACT:** Three out of four crashes occur within 25 miles of home.

I'm riding in the back seat. **FACT:** You can still be thrown from a vehicle even if you are riding in the back seat. If you are unrestrained, you also pose a risk to others in the vehicle with you.

I'm driving at night and the police won't see me. **FACT:** Police departments are increasing nighttime enforcement. In addition, there are more high-risk drivers on the roads at night such as impaired drivers and drowsy drivers, which may present increased risk for a crash.

To raise awareness of the life-saving capabilities of seat belts, Pennsylvania participates in the national Click It or Ticket campaign. As part of Click It or Ticket, motorists who are pulled over for a traffic violation and are not wearing a seat belt receive a second ticket and second fine for not buckling up.

Pennsylvania's seat belt usage rate has risen from 70 percent in 2000 to nearly 87 percent in recent years. Statistics show that 8 to 12 lives can be saved each year for every one percent increase in seat belt usage.

Child Passenger Safety

PennDOT cares about protecting our children and encourages all adults to take the responsibility of keeping them safe when riding in a vehicle. It is our job to make sure they buckle up – from the time when children are too young to do it themselves to the time when they are able to ride in the front seat and buckle their own seat belt.

Under Pennsylvania's primary child passenger safety law, children under the age of four must be properly restrained in an approved child safety seat anywhere in the vehicle.

To ensure that child restraints are being installed properly, PennDOT provides funding for more than 75 fitting stations where trained technicians will check the child safety seat.

In addition, Pennsylvania law also requires children ages 4 to 8 to be restrained in an appropriate booster seat, while children ages 8 to 18 must be in a seat belt.

Aggressive Driving



More than 400 municipal police departments and the Pennsylvania State Police are participating in PennDOT's Aggressive Driving Enforcement and Education Project. Since the project launched in 2006, more than 400 roadways have been targeted with additional enforcement and education.

PennDOT offers these tips for what to do when you encounter aggressive drivers.

- Get out of their way and don't challenge them.
- Stay relaxed, avoid eye contact and ignore rude gestures.
- Don't block the passing lane if you are driving slower than most of the traffic.

Speeding is the most common aggressive driving violation that contributes to crashes. Approximately 20 percent of Pennsylvania's traffic fatalities are related to speeding.

Additional aggressive driving behaviors include running red lights and stop signs, tailgating, making unsafe lane changes and failing to yield.

Impaired Driving

Alcohol-related fatalities account for more than 30 percent of all traffic fatalities in Pennsylvania.

However, impaired driving covers not only alcohol, but impairment as a result of drugs or prescription medication, or a combination of any of these elements.

Pennsylvania continues to enhance its drug-impaired enforcement by training officers in Advanced Roadside Impaired Driving Enforcement and the Drug Recognition Expert programs.

Each year, PennDOT invests between \$4 million to \$5 million in impaired driving enforcement.

If you decide to drink, PennDOT encourages you to plan ahead by either designating a sober driver or arranging for alternate transportation.

Motorcycles



With more than 800,000 licensed motorcycle riders in Pennsylvania, PennDOT continues to focus on improving motorcycle safety.

An important component to motorcycle safety is encouraging motorists and motorcycles to share the road. Motorists should always be on the lookout for motorcycles, realizing they are small and may be difficult to see. It's also advisable to allow more following distance, and always signal your intentions before changing lanes or merging.

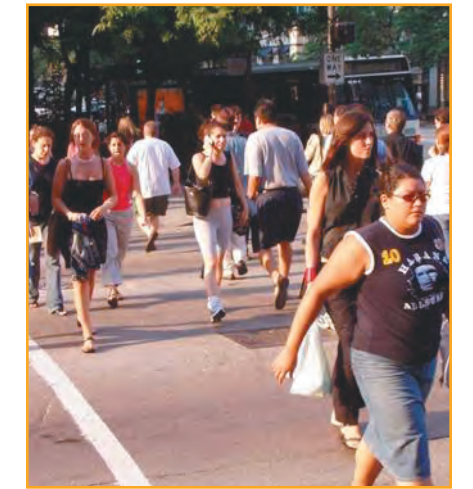
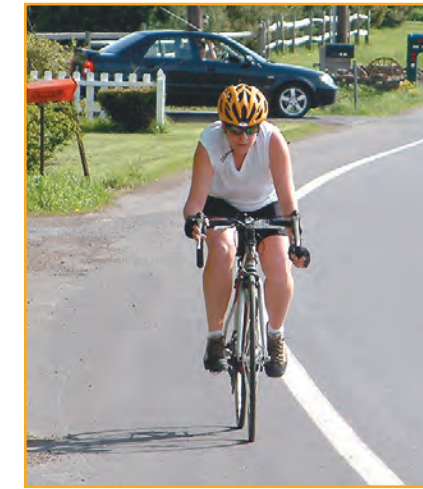
Although motorists must learn to watch for motorcycles, approximately 45 percent of motorcycle crashes in Pennsylvania are single-vehicle crashes.

Riders can improve their safety on the road by following some simple safety tips.

- Wear a U.S. DOT-approved helmet, face or eye protection and protective clothing.
- Know your motorcycle and conduct a pre-ride check.
- Use common sense by riding sober, obeying all speed limits and allowing enough time to react to dangerous situations.
- Practice safe riding techniques and know how to handle your motorcycle in adverse road and weather conditions.
- Consider attending free training via PennDOT's Motorcycle Safety Program (www.pamsp.com).

Bicyclists and Pedestrians

While Drive Safe PA focuses on changing driver behavior, bicyclists and pedestrians can also take steps to enhance highway safety.



Bicyclist Tips

- Wear light-colored, reflective clothing so you can be seen.
- Consider wearing an approved helmet and other protective gear.
- Children under 12 years of age must wear an approved safety helmet.
- Ride on the right side of the road.
- Signal your intentions in advance.
- Consider attending training to obtain the skills necessary to ride safely on the road.

Pedestrian Tips

- Wear light-colored, reflective clothing so you can be seen.
- Walk against traffic.
- Make eye contact with motorists before crossing the street.
- Be aware of your surroundings.

www.DriveSafePA.org